



**LIGHTNING**

# SERVICE BULLETIN No.002

*Circulate to listed addressees.*

<b>PRODUCT MODEL</b>	: CCS Lightning
<b>BULLETIN TYPE</b>	: System verification
<b>MANUAL / SECTION</b>	: Parts List 1900/1901 Workshop Manual Page 48, Figure 18
<b>PARTS LIST REVISION</b>	: No
<b>EFFECTIVE DATE</b>	: October 1 <sup>st</sup> , 2005
<b>SUBJECT</b>	: <b>HVAC Harness temperature sensor connection</b>
<b>UNITS AFFECTED</b>	: SN: <b>(10K CHEB)</b> 44685106, 44685111, 44685112, 50962563, 51691600-51691604, 51691606, 51691607, 51691609-51691629, 51691659-51691665, 51691668, 51691668, 51691671, 51691673-51691699, 51691740-51691744, 51691747-51691767, 51691772-51691779, 51691831, 51691833 <b>(14K CHEB)</b> 44889544, 44889545, 44889552, 51691850-51691855, 51691859, 51691861, 51691864-51691872, 51691904, 51691918, 51691935-51691938, 52858001-52858010, 52858021-52858030, 52858041-52858050, 52858061-52858070, 52858081-52858090, 52858101-52858110, 52858121-52858130
<b>PARTS AFFECTED</b>	: 1058689, 1058691
<b>TERMS &amp; CONDITIONS</b>	: No claims will be accepted with reference to this Bulletin.

**DESCRIPTION:**

The CHEB units with the above mentioned serial numbers have a minimal chance of having the outlet temperature sensors and the compressor temperature sensor connected backwards.

*Service personnel: Please read, initial and circulate.*

Service Manager	Parts Manager	Warranty Administrator	Workshop Foreman	Service Technician

**SYMPTOMS:**

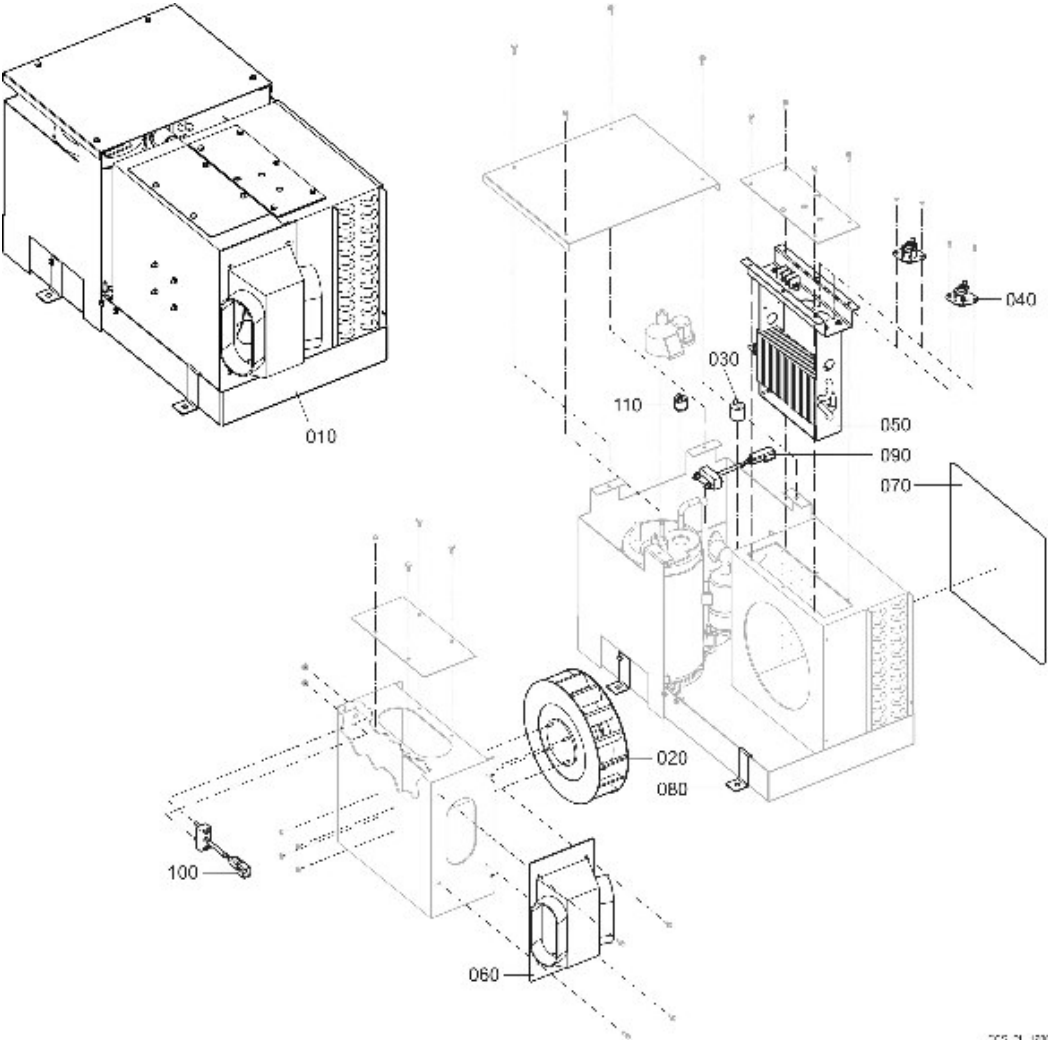
- HVAC does not produce cold air
- Condenser fan does not run at full speed even in hot environment (This can be verified in diagnostic mode)
- Refrigerant line coming back from condenser to evaporator (Smaller diameter liquid line) abnormally hot.

**CORRECTION:**

1. Disconnect HVAC harness from distribution box.
2. Disconnect harness from temperature sensors (See illustration for sensor location parts 090 and 100)
3. Reconnect HVAC harness to proper sensor:
  - a. The temperature sensor that is mounted in the blower housing should be connected to the wiring harness connector with wire numbers 75 and 77b
  - b. The temperature sensor that is mounted on the compressor outlet line should be connected to the wiring harness connector with wire numbers 76 and 77a
4. Reconnect HVAC harness to the distribution box.
5. Reset the controllers by removing fuse F1 from the APU fuse block and waiting 10 seconds before reinstalling

 **WARNING**

Before performing work on the CHEB unit disconnect the HVAC harness from the control box to prevent electrical shock.



005\_71\_1000

**DISCLAIMER:**