



LIGHTNING

SERVICE BULLETIN No.008

Circulate to listed addressees.

PRODUCT MODEL	: CCS Lightning
BULLETIN TYPE	: Product Update
MANUAL / SECTION	: N/A
PARTS LIST REVISION	: N/A
EFFECTIVE DATE	: June 11, 2007
SUBJECT	: VIBRATION ISOLATOR REPLACEMENT
UNITS AFFECTED	: Units purchased prior to June 2007
PARTS AFFECTED	: 1063742 & 1058585 vibration isolators
TERMS & CONDITIONS	: N/A

DESCRIPTION:

If during inspection the APU vibration isolators are found to be worn out, they should be replaced with the new style isolators.

Service personnel: Please read, initial and circulate.

Service Manager	Parts Manager	Warranty administrator	Workshop Foreman	Service Technician

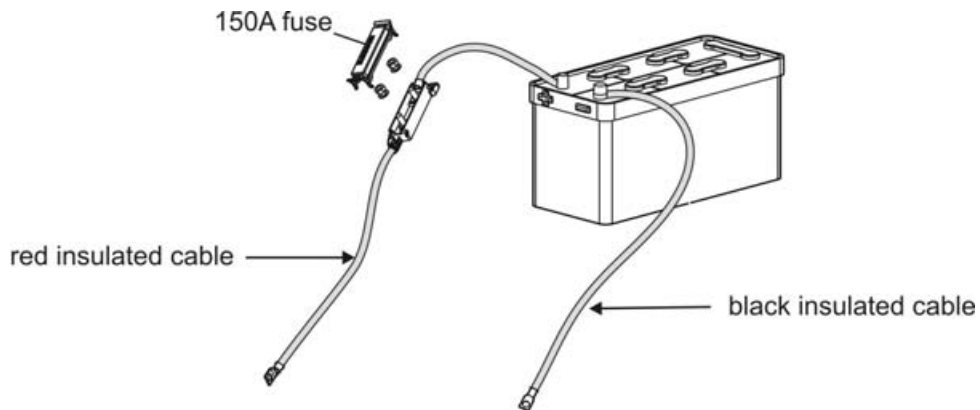
SYMPTOMS

- Excessive vibration (especially during startup and shutdown)

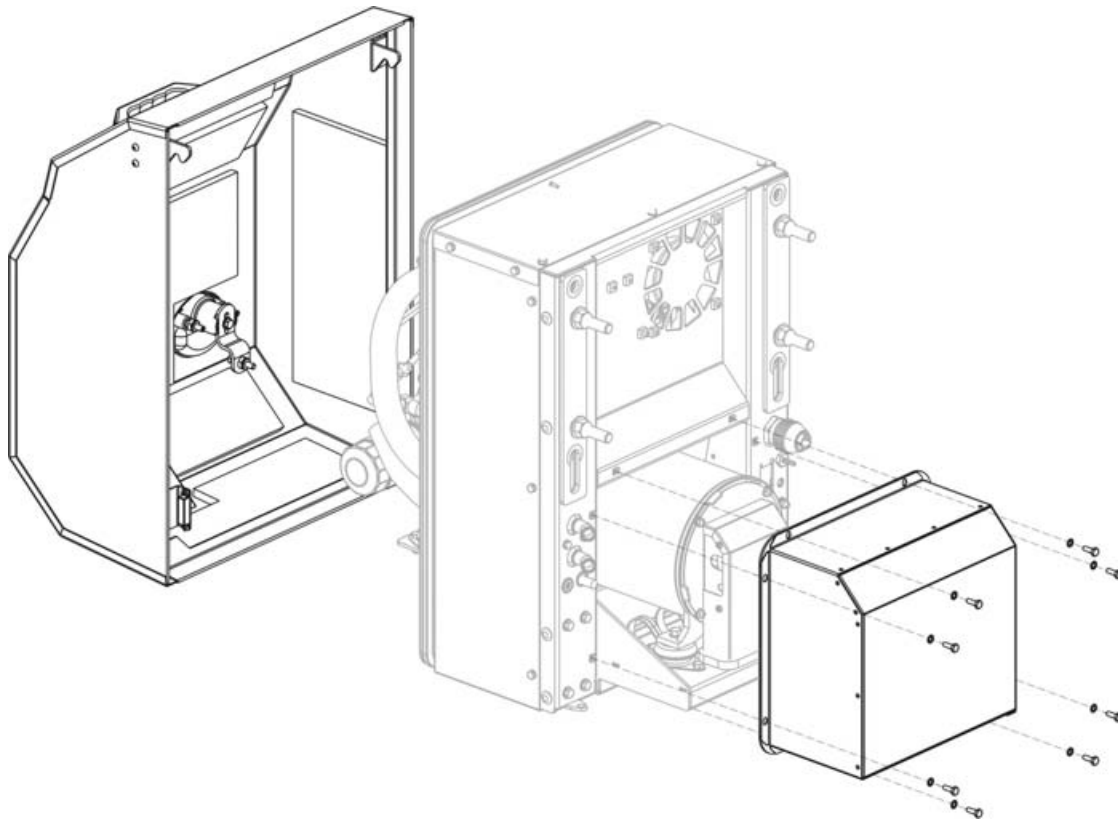
INSPECTION

Inspect isolator mounting for spacer plate P/N 1068788. If spacer plate is not present, update front and rear isolators using kit P/N 1070346 VIBRATION ISOLATOR REAR (x2) and kit P/N 1070345 VIBRATION ISOLATOR FRONT (x2)

CORRECTION

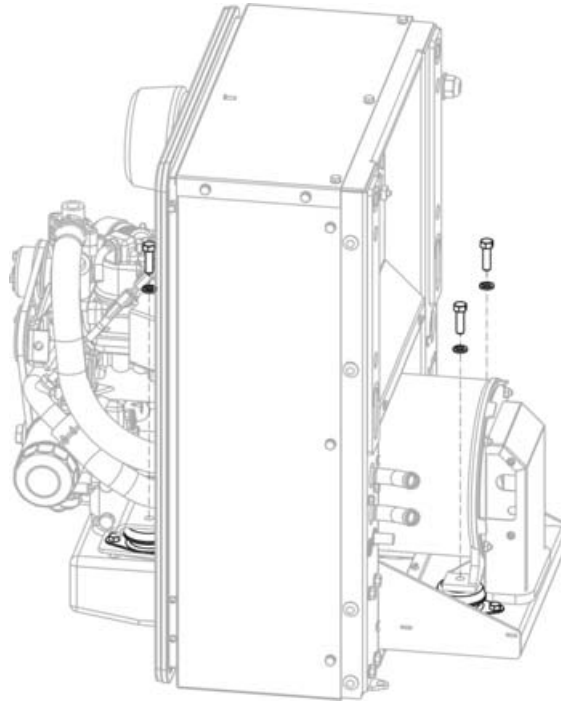


1. Pull out 150A main fuse at batteries.

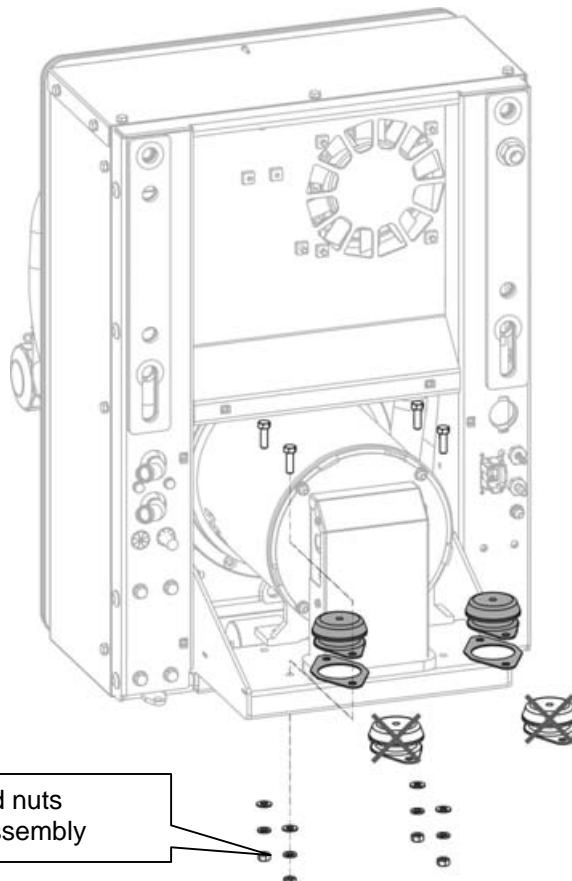


2. Remove front APU cover and set aside.

3. Remove 8 screws (1/4-20) and washers from alternator cover, then remove alternator cover and set aside.

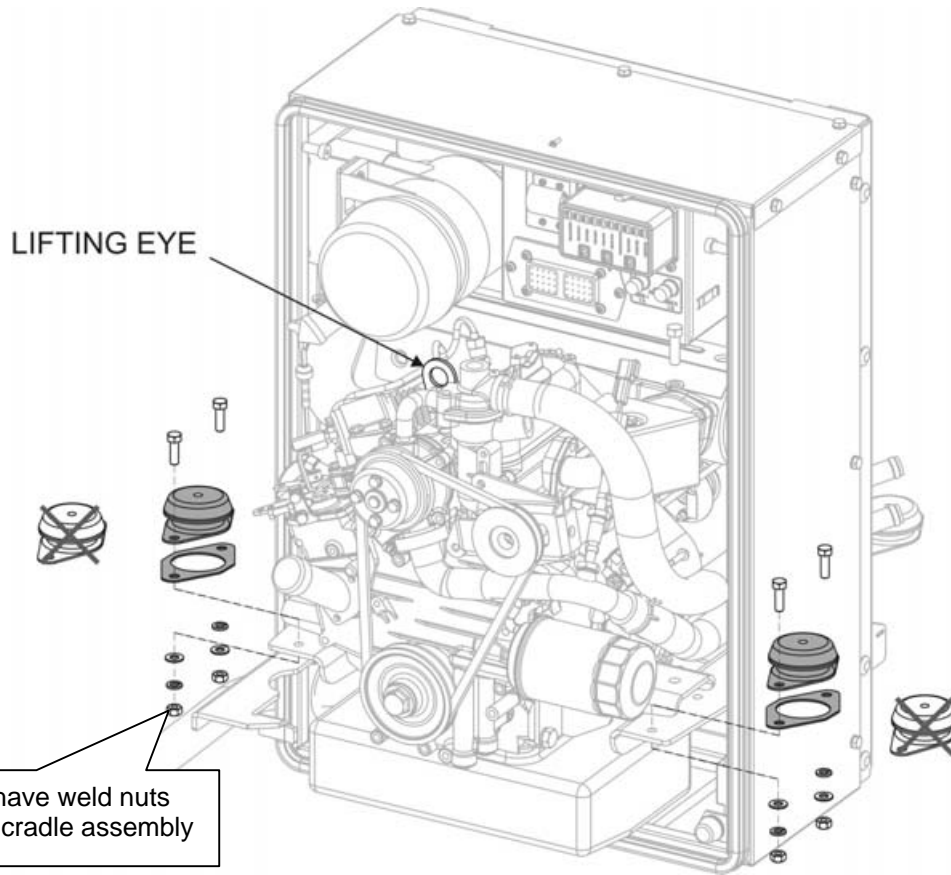


4. Place pry bar under isolator cap and push up to ensure isolator does not rotate (or use vise-grip pliers to hold the isolator cup). Remove centre isolator mounting bolts (M10, 17mm hex head) and lock washers from all 4 isolators.



Newer versions have weld nuts installed into the cradle assembly

5. Remove isolator to cradle mounting bolts, washers and nuts (5/16-18) and set aside for future use.
6. Using a spacer block to support the Alternator Assembly, remove the rear isolators.
7. Install a spacer plate (1068788) and isolator (1068698 – RED DOT) under each side of the Alternator Bearing Housing. These parts are included in 1070346 KIT, VIBRATION ISOLATOR, REAR, CCS/ITEC.
Remove the spacer block under the alternator assembly.
8. Loosely install the isolator to cradle mounting bolts, washers and nuts (5/16-18) until hand tight.



9. Use a hoist to support the engine with the integrated lifting eye (or lift engine with floor jack supporting under oil pan). Remove the isolator to cradle mounting bolts, washers and nuts (5/16-18) from under the engine mounting feet. Remove the isolators and replace with a spacer plate (1068788) and isolator (1068697 – BLUE DOT) under each side. These parts are included in 1070345 KIT, VIBRATION ISOLATOR, FRONT, CCS/ITEC.
Disconnect the hoist from the engine.
10. Loosely install the isolator to cradle mounting bolts, washers and nuts (5/16-18) until hand tight.
11. Install the centre mounting bolts (M10, 17mm hex head) and lock washers into each isolator until hand tight.
12. Using a pry bar under each isolator cap (or use vise-grip pliers to hold the isolator cup), tighten each centre isolator mounting bolt until a torque of 35 ft-lb is achieved.
13. Torque the isolator to cradle mounting bolts to 11 ft-lb.
14. Re-install the alternator cover and the mounting bolts and washers (8 total). Torque bolts to 6 ft-lb.
15. Re-install the front APU cover.